

WebDAV

**File
Management
for WebCT**

INSTRUCTIONAL COMPUTING SERVICES



WebDAV File Management for WebCT

Table of Contents

What is WebDAV?	2
Why Would I Want WebDAV in WebCT?.....	2
Notes on using WebDAV	2
Your Course ID and the URL for your Web Folder.....	3
Set up Instructions for PCs	3
Windows 95/98 Instructions	3
Windows 2000/ME Instructions	5
Windows XP Instructions	6
Moving and Coping Files Using WebDAV in the Windows Environment	7
Set up Instructions for MACs	8

What is WebDAV?

WebDAV stands for '**Web-based Distributed Authoring and Versioning**'. It allows web authors to manage files of their web sites through the '**Web Folders**' of their local workstation operating on Windows or Macintosh. With WebDAV, course designers can now manage files of their WebCT courses directly on remote web servers from their workstations without having to upload and unzip files via the browser interface.

Why Would I Want WebDAV in WebCT?

WebDAV makes it easier to manage the contents of a WebCT course. The File Manager tool in WebCT can be very confusing and requires many steps to do simple things like uploading multiple files.

If you are a course designer using a Windows 95/98/NT/2000/ME/XP machine with IE5 or Office 2000, you can copy, move, delete, rename or upload/download files as if you were using a local folder. (Mac users need to install **Goliath**, a WebDAV client, available at <http://www.webdav.org/goliath/>)

An upcoming feature in WebDAV will allow course designers to save multiple versions of a document. If they change a document and want to revert to an earlier version they can.

Notes on using WebDAV

1. WebDAV supports file locking so that when a user is editing a file in a web folder, that file can only be viewed on the web but cannot be edited by other users.
2. For applications such as Office 2000, the **web folder** icon will appear in the folder list of the application such that users can edit the file directly from this application. For other applications in which the web folder cannot be located, users can save their files on a local disk drive and then copy the files to the web folders later.

Note: Although you can move any file or folder using WebDAV, you still need to abide by the UNIX style naming conventions. Otherwise, you will have problems accessing the files in WebCT.

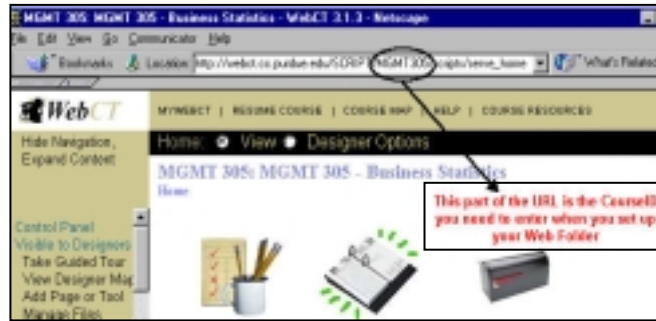
There are rules for the ways you can name files. **You can use letters, numerals, periods and the underscore (_) in your filenames.**

Do not use spaces, tabs, line feeds, carriage returns or any of the following signs while naming your files:

: ~ [] ! @ # \$ % ^ & * () + ` { } | \ < > , ? / ; ' "

Your Course ID and the URL for your Web Folder

In order to set your WebCT course directory as a folder in your local drive, you will need to type the URL for your course. In order to find out which address you will need

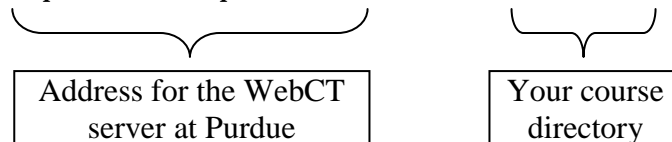


to type when you set up your WebDAV connection, first log on to WebCT and then click on the course you want to set up a WebDAV folder for. When your course homepage opens up, the address for the course will be displayed in the address textbox of your browser.

The address will be in one of the following formats:

`https://webct.ics.purdue.edu /SCRIPT /CourseID /scripts/...`

`https://webct.ics.purdue.edu /SCRIPT /EDCI682 /scripts/...`



Depending on the server your course is located, the URL you will need to type for the course location while setting up a web folder will be in the following format:

`https://webct-webdav.ics.purdue.edu/CourseID`

`https://webct-webdav.ics.purdue.edu/CourseID`

Important Note for Mac Users: Goliath, the WebDAV client for MACs doesn't support secured (SSL) servers. In other words, you can not create a local folder for the `https://webct.....` address if you are a MAC user.

Set up Instructions for PCs

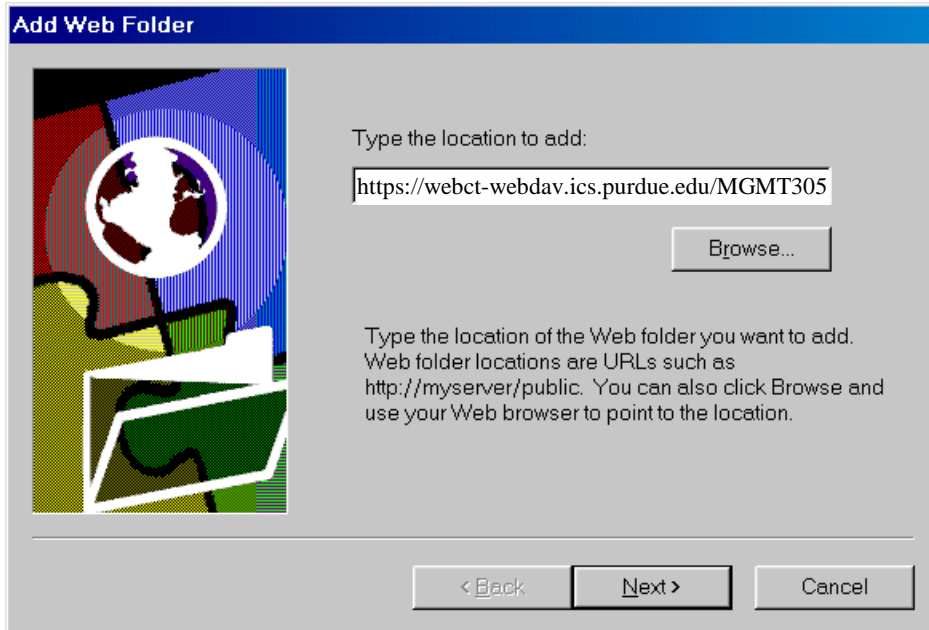
Windows 95/98 Instructions

The pre-requisite is to have the Internet Explorer 5 browser installed. Then, follow these steps to setup a web folder that connects to your WebCT course :

1. From the *Desktop*, double click **My Computer** (or start the 'Windows Explorer').
2. Double click **Web Folders**.
3. Double click **Add web folder**. *The add web folder wizard* screen appears.
4. Enter 'https://webct-webdav.ics.purdue.edu/CourseID' as the location,

(e.g. <https://webct-webdav.ics.purdue.edu/MGMT305>) and click **Next**.

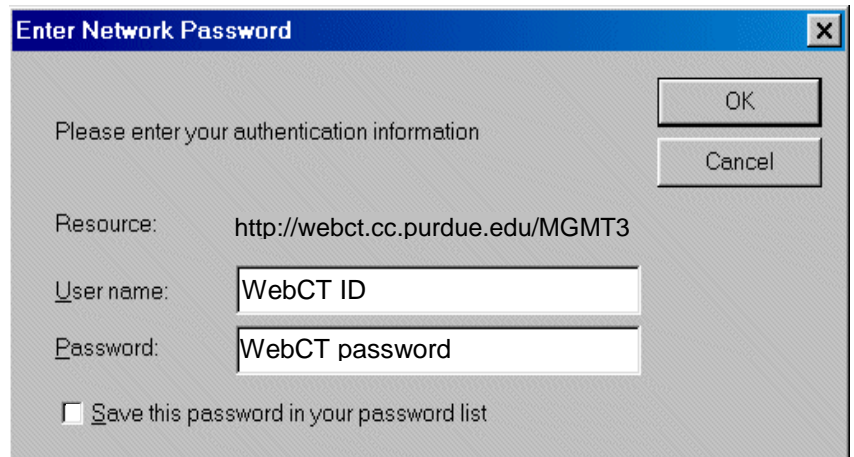
Note: All pictures in this section contain the old webdav address. However, if you proceed with the new address given in the steps that is the address that will be shown in the window.



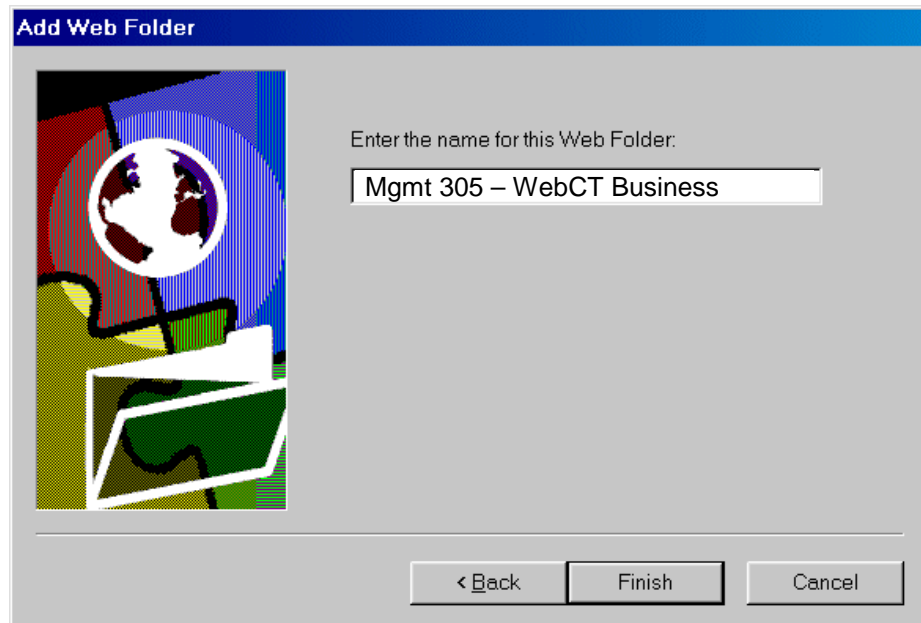
Note: If you enter the URL for the secured server you will first see a certificate authentication security alert before the wizard asks you the log in information below. You have to click yes, to proceed with the certificate authentication before you can continue.

5. Enter your WebCT designer's name and password, uncheck the *Save this password in your password list* box and then click **OK** . Remember this user name and password are you Purdue Career Account information.

Note: The Save this password in your password list box will be checked by default. For security reasons we strongly recommend you to uncheck this box before you proceed.



- Label the new web folder with an identifier of your choice, e.g. 'Mgmt 305 – WebCT Business Statistics'. And then click **Finish**.



This folder can now be referenced by Windows. You can create folders; move, copy and delete files from Windows. Keep in mind that you need to be connected to the internet to access and make changes to this new Web Folder you have created.

Windows 2000/ME Instructions

Setting up your WebCT course directory as a local folder in your hard drive in Windows 2000 and Windows ME is actually very similar to what you do in Windows 95/98. Instead of creating a “Web Folder” you will have to create a “Network Place.”

You can follow the same set up instructions provided above for Windows 95/95 with the following exceptions:

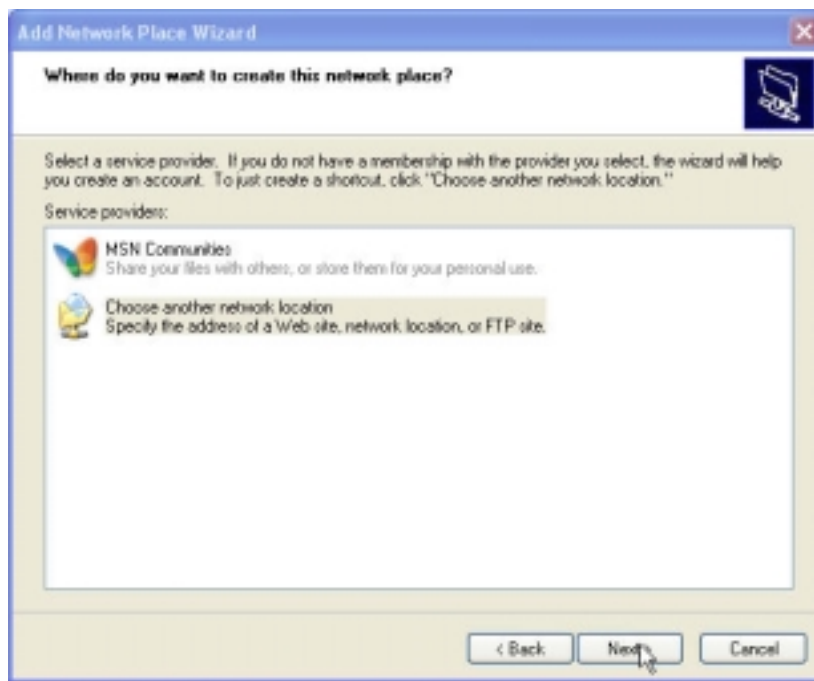
- Instead of double clicking on *My Computer*, open **My Network Places** from your desktop.
- Instead of *Add Web Folder* from the *Web Folders*, click on **Add New Network Place**. The *Add New Network Place* will appear.

Although the wizard may look slightly different than what’s depicted in the Windows 95/98 instructions above the information you will need to provide is identical so you can follow the steps described in that section.

Windows XP Instructions

Setting up your WebCT course directory as a local folder in your hard drive in Windows XP very similar to what you do in Windows 2000 and ME. As in those systems you will have to create a “Network Place.”

1. Double click on *My Computer* and open **My Network Places**. You may also be able to do this from the desktop.
2. Select **Add a network place**. The *Add Network Place Wizard* will appear. Click **Next**.
3. Select *Choose another network location*, and click **Next**.



4. Enter **https://webct-webdav.ics.purdue.edu/CourseID** as the location, (i.e. <https://webct-webdav.ics.purdue.edu/MGMT305>) and click **Next**.
5. A window may pop up asking for your user name and password. This information is your Purdue Career Account and password. Enter the information and click **OK**.
6. Create a name for the network place that will help you to easily identify this network place. Click **Next**. The *Completing the Add Network Place Wizard* will appear, click **Finish**.

Moving and Coping Files Using WebDAV in the Windows Environment

The easiest way to move and copy files using WebDAV is the click and drag method. To do this, a window containing your WebDAV files and a window as to where you would like a file(s) moved/copied should be open.

1. Single click on one or several files to be moved/copied. By clicking on them, the file(s) should be highlighted.
2. Place your cursor over the file(s), click and then begin to drag them toward the other (new) window where you would like the file(s) to be placed.
3. As you do this, two boxes could appear directly below the cursor. The first box with a shaded outline will be empty. If the second box is there it will contain a plus (+) sign. The plus sign signals that the file(s) are being copied; the file(s) will be in both places. If this box and plus sign are not present the file(s) are being moved; the file(s) will no longer be in the original place. The plus sign can be added or removed by pressing the CTRL key as you drag.

Set up Instructions for MACs

System requirement for Mac users is to have a PowerPC based Macintosh running MacOS 8.1 or higher. The current version of Goliath supports our current SSL-only WebCT connections, so you should be able to use WebDAV with Macs without a problem. Please note that there are actually 2 different versions of Goliath software. One for the new Mac X version, and one for Classic Mac. If you are running a MacOS version 8.x to 9.x, please use the Classic version.

Follow these steps to connect to your WebCT course through **WebDAV**:

1. Download the Goliath application at:
<http://www.webdav.org/goliath/#download>.

Downloads

Classic MacOS Use this link if you have MacOS 8.1 to 9.x

An installer for the latest version (0.9.1) of this application can be downloaded [here](#) (approx 2.1 MB BinHex encoded Installer).

Mac OS X Use this link if you have MacOS X

DiskCopy archive for Mac OS X is available [here](#). Decompress the file and double click on the .dmg file. A disk image named 'Goliath 0.9' should now be available. Simply drag and drop the Goliath folder contained within the disk image to your hard disk.

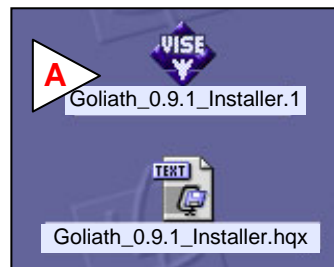
Source Code

For those who are technically inclined, the source code can be found [here](#) (approx 884 kb Stuff-It archive). In order to build this software, both CodeWarrior Pro 7.1 and version 1.8.5 of the [DAVLib](#) library are required.

Older downloads

An archive of older installations of goliath (along with their source code) is [here](#)

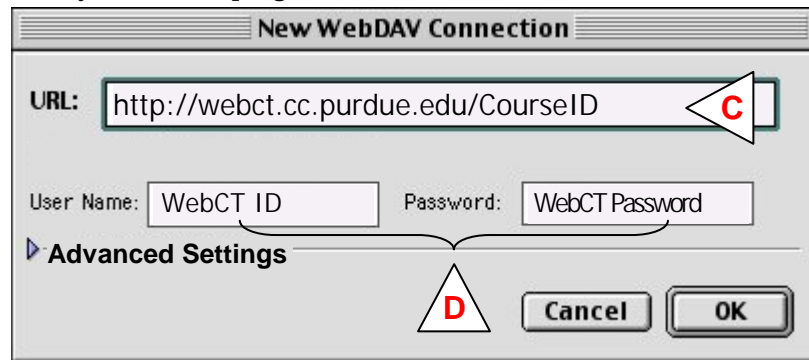
2. Once the Goliath_0.9.1_Installer.hqx file is downloaded to your hard drive, run the installer program to start the setup process **[A]**. The *Goliath 0.9.1 Installation wizard* will appear.
3. After clicking *Accept* for the license information, choose the installation location for the Goliath 0.9.1 folder and then click **Install**.



- Once the folder is created start the WebDAV application, **Goliath 0.9.1** from the folder **[B]**.

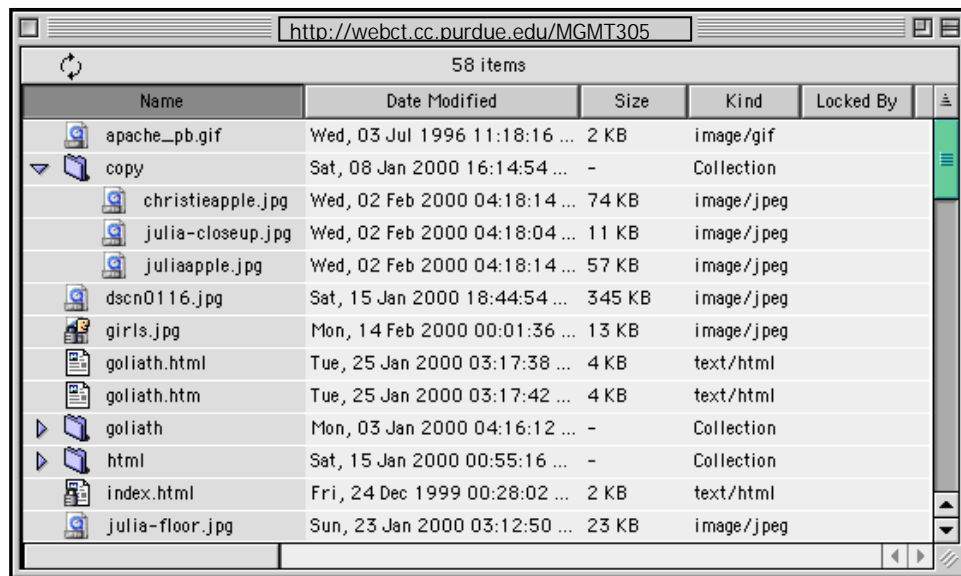


- When you start the program for the first time the **New WebDAV**



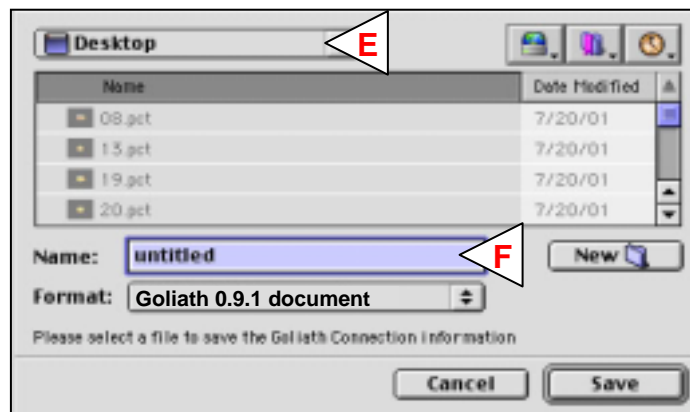
Connection screen seen below will automatically appear. If not, go to the file menu and click **New Connection**. Fill in the URL for your WebCT folder **[C]**, and enter your WebCT ID and password in the boxes **[D]**. Then Click **OK**.

6. A web folder, which will look similar to the window below, will be created. To upload files to server, drag-and-drop the files to the **WebDAV** folder.



7. If you want to keep this web folder connection permanently on your computer you have to save this connection before you close the folder. To do so in Goliath 0.9.1, go to the file menu and click **Save Connection**. Type a name for your WebDAV folder [**E**] and choose the location for the folder [**F**] and then click **Save**.

Note: You'll need to create one WebDAV folder for each WebCT class you design. To create a new connection in Mac environment, simply start the Goliath application, and then click New Connection, under the File menu. You can then repeat steps 5 & 6 to finish and save your connection.



To learn more about **WebDAV** on Mac, please visit this web site <http://www.webdav.org/goliath/>.

If you would like to learn more about **WebDAV** in general, please visit their site at <http://www.webdav.org/>.